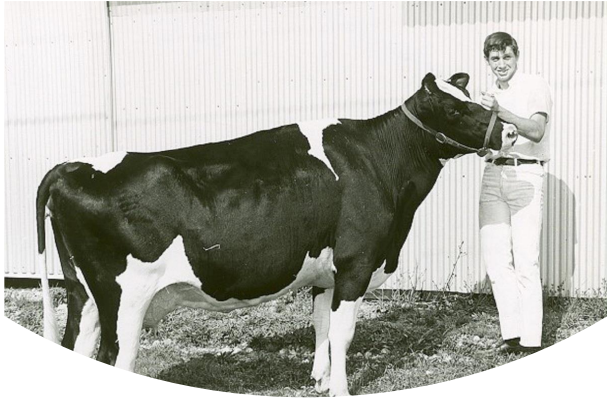


Minds on Quick Questions...

- Has our food always looked the same?
- How has food changed over the years?
- Why has food changed?

Then and Now





Then...



Now...



Then...



Now...



Then...



Now...



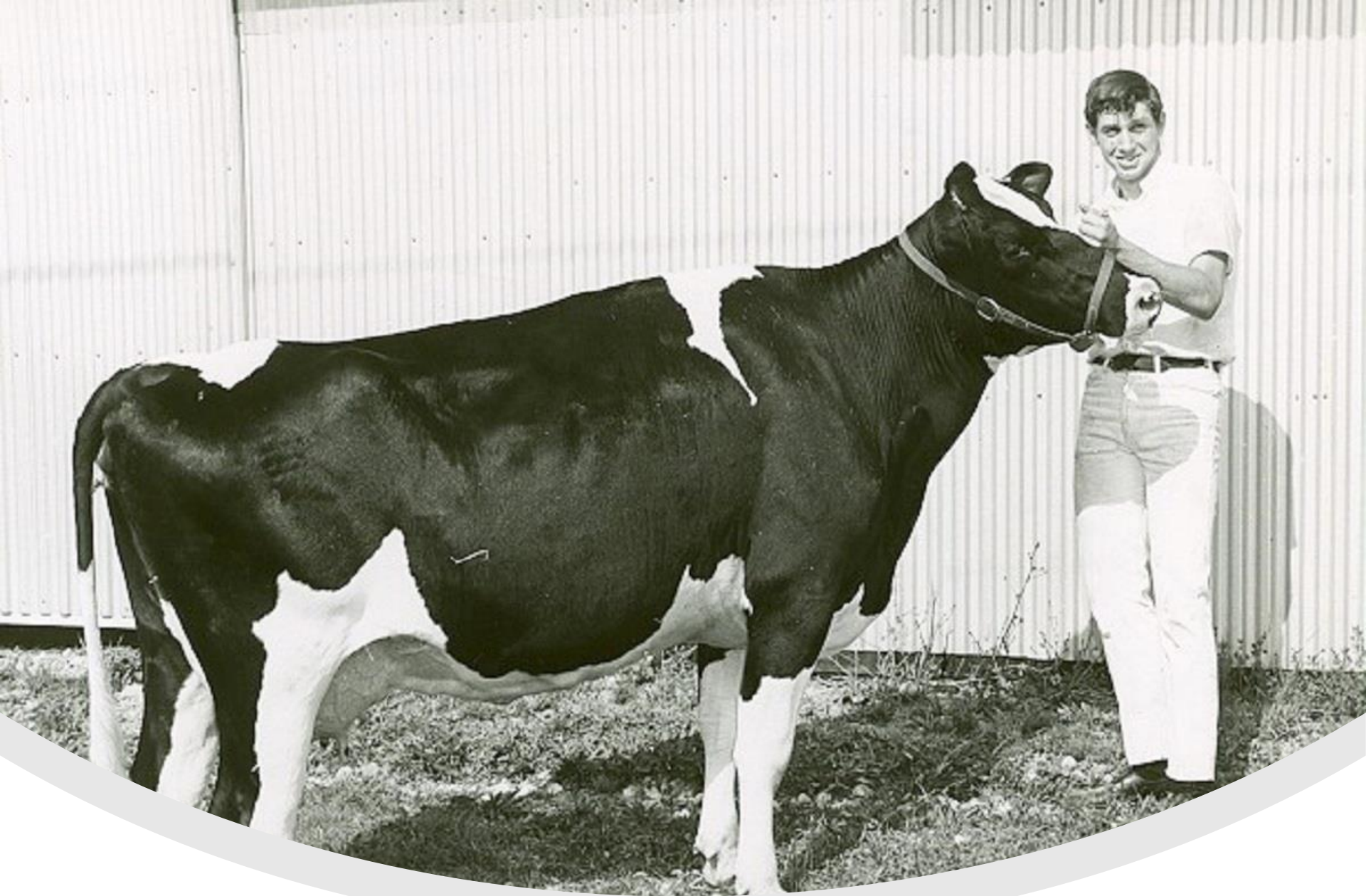
Then...



Now...

What has caused
these traits to
change?

Have humans
influenced animal
traits?



Then... In 1944, the average cow produced 548 gallons of milk per year.



© Lea Jordan
Cybil Fisher Photo

Now... The average cow produces 2,429 gallons of milk per year.

Selective Breeding



Selective Breeding

Milk Production

- Which cows did you select and why?
- How does selective breeding in the dairy industry affect us as consumers?

Selective Breeding

- **Butterfat Content**

- Which Jersey cows did students select to maintain a high butterfat content in the herd?

Selective Breeding

- **Birthweight and Weaning Weight**

- Which Angus bull has a low birthweight for small cows, but high weaning weight?
- Will some students sacrifice a low birthweight to have a very high weaning weight?

Selective Breeding

- **Horned and Polled Cattle**
 - Which cows should be selected to ensure **no** offspring have horns?



NATURAL SELECTION

VS



ARTIFICIAL SELECTION



GMO Issue, Solutions and Results

- Come grab a set of cards...
- Read through the issues...
- Think about...
 - Are you familiar with any of these issues related to the production of our food and fiber?
 - What are the negative impacts of these issues?
 - Who is affected by these issues?
 - Can any of the issues be resolved?

GMO Issue, Solutions and Results

- Solutions
- Read through the solutions and match each of the solutions to an issue.

- Results
- Read through the results and match each of the results to an issue

GMO is Canada

- Work through questions and video on learninghood.

Creating GMO

- Note video and summarize